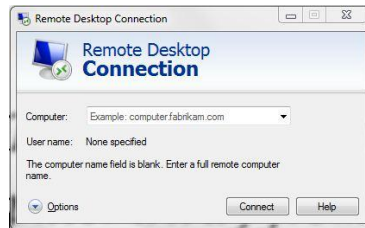


Using "Remote Desk Top" to connect to the Bruern Server from home or any computer away from School.

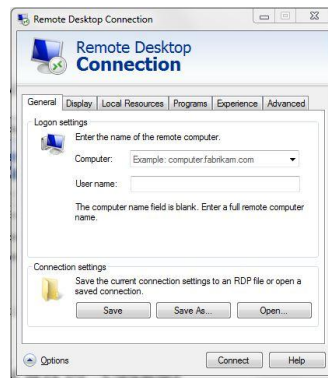
1. Click on Start (Bottom Left)
2. Click on "All Programs"
3. Click on the "Accessories" folder
4. Click on "Remote Desktop Connection"

This window should open



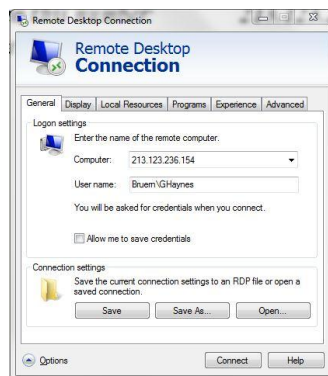
5. Click on the little arrow down to the left of "Options".

This window should open.



6. Where it says Computer click on the box to the right and type in this number: 213.123.236.154
7. Where it says User Name click on the box to the right and type in your user name (i.e. Bruern\GHaynes) **MINE**

It should look like this.



8. Click on the "Local Resources" tab.

It should look like this.



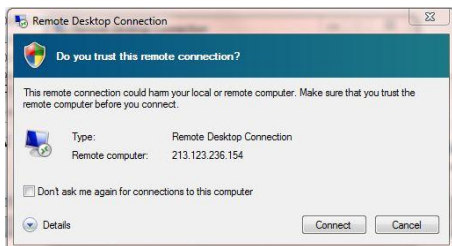
9. Click on the "More..." box

This window should open.



- 10. Click on the three boxes by – Ports, Drives, Other supported PnP devices, so that there are ticks in them all.
- 11. Click "OK".
- 12. Then click on connect in the remote connection window.

This window should open.



- 13. Tick the box "Don't ask me again for connections to this computer".
- 14. Click "Connect".

This window should open with your name instead of mine.



- 15. Type your Bruern Password where it says password and click "OK".

This window should open



- 16. Tick the box "Don't ask me again for connections to this computer" and then click "Yes".

You should now connect to the Bruern Server.

